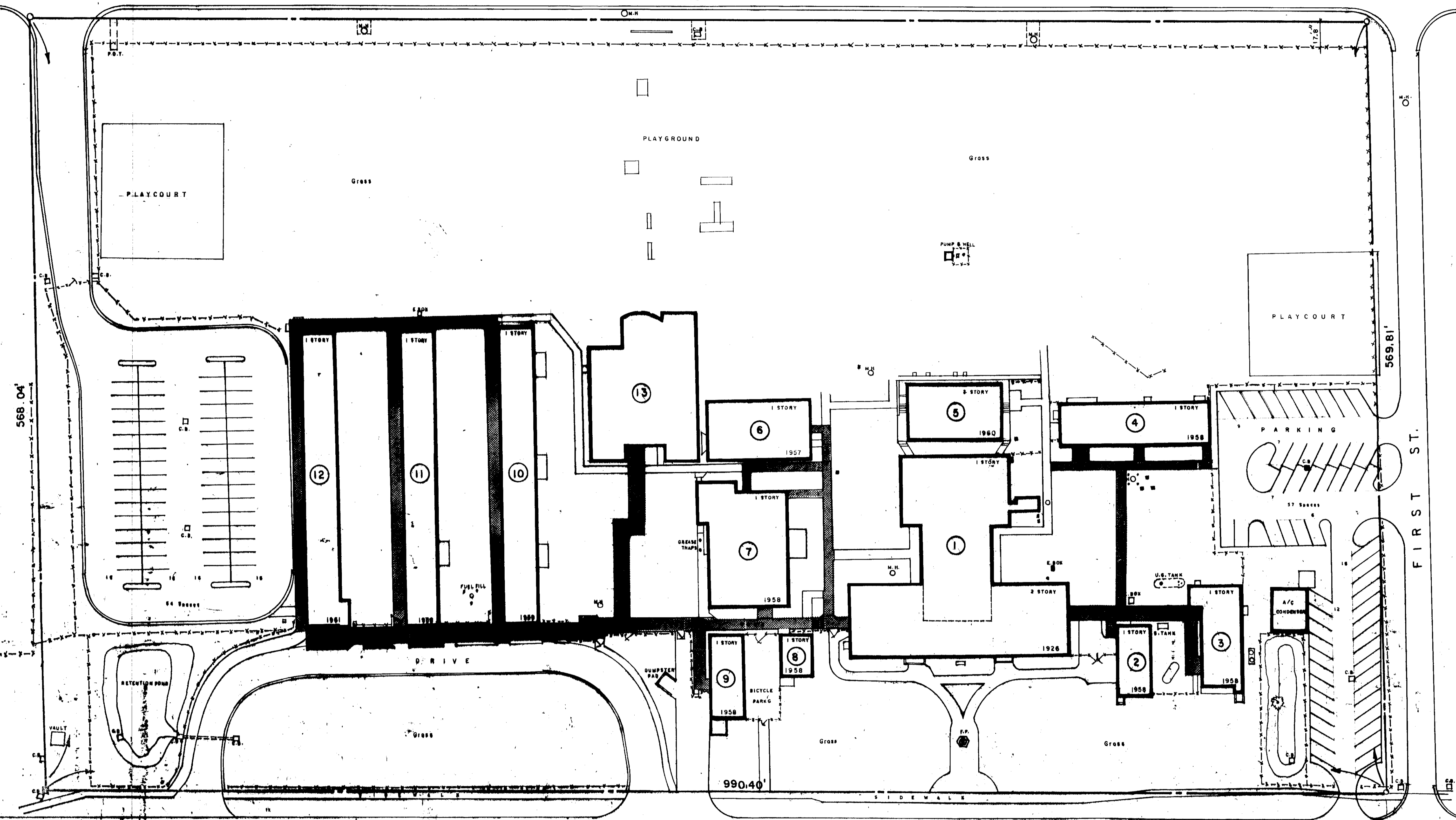


MILITARY TRAIL

(S. R. 809)

(A.K.A. Perry Ave)

990.35'

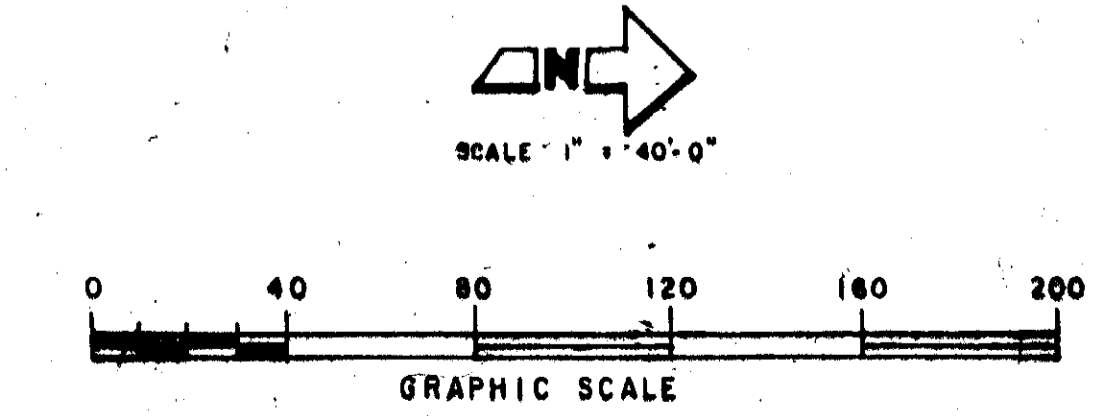


**BLDG.**

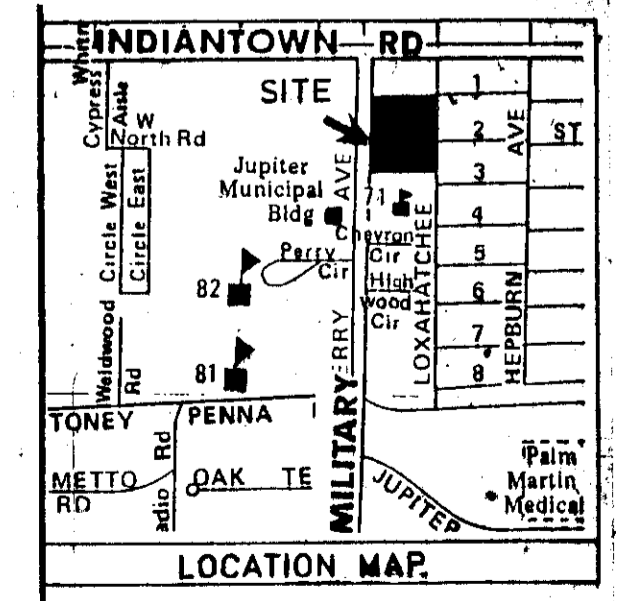
1	ADMIN. CL. RMS & GYM
2	CLASSROOMS
3	KINDERGARTEN CL. RMS
4	CLASSROOMS
5	HALL
6	LIBRARY
7	SALE DINING
8	CLASSROOMS
9	CLASSROOMS
10	CLASSROOMS
11	CLASSROOMS
12	ADMIN. CLASSROOMS
13	MEDIA CENTER

**LEGEND**

4	BUILDING NUMBER
101	ROOM NUMBER WITH STUDENT STATIONS
117	ROOM NUMBER
A	ROOM NUMBER SUFFIX TO ADJACENT ROOM
(thick line)	COVERED WALKWAYS
(dashed line)	INTERIOR CIRCULATION
(dotted line)	PROPERTY LINE
(dash-dot line)	FENCE
(circle with cross)	PROPERTY MARKER



ADMIN. NO. 0071  
 PARCEL NO. 007  
 PARCEL ACREAGE TOTAL 12.9  
 TOTAL PARKING SPACES 121



	REVISIONS 11-17-97	DATE	<b>THE SCHOOL BOARD OF PALM BEACH COUNTY, FLORIDA</b> FACILITY DESIGN ARCHITECT	TITLE <b>MASTER SITE PLAN</b>	SCHOOL 0071	<b>JUPITER ELEMENTARY</b> JUPITER	SHEET 1 / 2
		DRWN BY P.D.M.					JOB NO. 135
		CHKD BY					

NORTH AREA